

**BTY-2-FM
FM ANTENNA**

The BTY-2-FM is a professional quality, FM band antenna designed specifically for FM reception applications. This antenna covers the entire FM band from 88 to 108 MHz using two half-wave dipole elements mounted 90° to one another. This design gives the BTY-2-FM an omnidirectional (360°) reception path.

The BTY-2-FM is supplied complete with two dipole elements, an 18" square boom, universal mounting bracket and connector cable. The heavy duty mounting bracket is designed for either vertical or horizontal tower members and will attach to masts up to 2.5" inches in diameter. The BTY Series Antennas can accommodate a maximum mast size of 2.5" O.D. (outside diameter). These antennas feature a 75 Ω type "F" connector to provide feed on coaxial cable down leads.

SPECIFICATIONS

ELECTRICAL	BTY-2-FM	Units	MECHANICAL (continued)	BTY-2-FM	Units
Gain Over Isotropic:	2.2	dBi	Maximum Element Width:	59.0	in.
Bandwidth:	88-108	MHz	Turning Radius:	29.0	in.
Beamwidth (-3 dB):	360° azimuth	°	Max. Cross Sectional Area:	0.463	sq. ft.
VSWR:	1.67:1		Operational/Survival		
Return Loss:	12.0	dB	Wind Velocity:	125	mph
Impedance:	75	Ω	Output Connector:	Type "F", female, weather sealed	

MECHANICAL

Boom:	6063-T6 alum. tube 1.25" square, 0.062" wall		Max. Mast Diameter (O.D.):	2.5"	
Boom Length:	18.0	in.	Shipping Weight:	3.00	lbs
Number of Elements:	2			1.36	kg
Elements:	6063-T52 alum. tube 0.5" round, 0.049" wall		Shipping Size (LxHxW):	60 x 4.0 x 5.5	in.
				152 x 10 x 14	cm

**BTY-C-MOUNT
ANTENNA MOUNT**

The BTY-C-MOUNT consists of a heavy duty square aluminum boom and all clamping hardware required for rear mounting of the following BTY Series Antennas; BTY-5-LB, BTY-10-HB , BTY-LP-LB , BTY-LP-HB and BTY-LP-BB. Cantilever end-mounting is commonly used since the antennas are usually attached to tower legs rather than to masts. This maximizes the signal reception qualities of the antenna by keeping elements clear of support structures. It also eliminates the need for outriggers and masts. Antennas can be mounted horizontally or vertically on a tower leg or mast (1.25" to 2.5" OD) by rotating the mounting plate 90°. The BTY-C-MOUNT is designed to mount parallel to and below the antenna boom.

SPECIFICATIONS

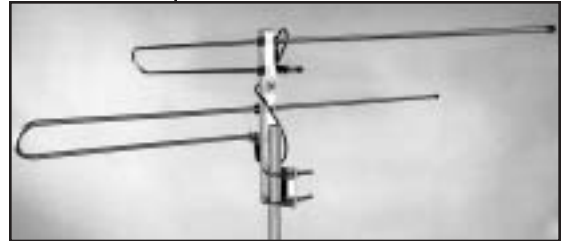
MECHANICAL	BTY-C-MOUNT	Units
Boom:	6063-T6 alum. tube 1.25" square, 0.062" wall	
Boom Length:	63.38	in.
Mounting Plates and Brackets:	14 gauge (0.074") stainless steel	
Max. Cross Sectional Area:	0.88	sq. feet
Wind Resistance (@100 mph):	58.2	lbs
Shipping Weight:	8.31	lbs
	3.78	kg

**BTY-MC
ANTENNA MOUNT**

The BTY-MC is a heavy duty, stainless steel antenna mounting clamp designed for stacking BTY Series Antennas. The resultant antenna array improves antenna gain for use in fringe areas. The BTY-MC has excellent weathering properties and exceptional strength. The number of clamps needed is dependent on the number of antennas stacked (i.e. 2 antenna array uses 3 clamps, a 4 antenna array uses 6 clamps). The BTY-MC is shipped completely pre-assembled and has a compact design for ease of mounting.

SPECIFICATIONS

MECHANICAL	BTY-MC	Units
Material:	Stainless Steel	
Mount Dimensions (WxHxD):	6 x 6 x 1.38	in.
	152 x 152 x 35	mm
U-Bolts		
Quantity:	4	
Size:	0.38	in. diameter
Maximum Tubing Size:	2.5	in. OD
Shipping Weight:	2.5	lbs
	1.14	kg



ORDERING INFORMATION:

**BTY-2-FM
Stock No. 4878**

FEATURES:

- Full 88-108 MHz Coverage
- 360° Beamwidth
- Fiber Filled Elements Dampen Vibration



5760



4879

**BTY-C-MOUNT
Stock No. 5760**

FEATURES:

- Antenna Cantilever Mount - Allows Antennas to Mount Directly to Tower
- Maximizes Signal Reception By Keeping Elements Clear of Support Structures
- Vertical or Horizontal Mounting

**BTY-MC
Stock No. 4879**

FEATURES:

- Stainless Steel Antenna Mounting Clamp
- Allows Stacking of BTY Series Antennas